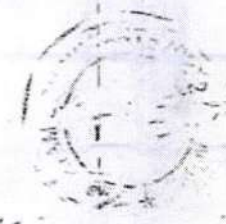


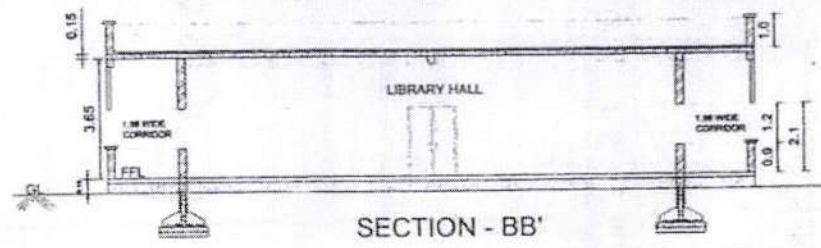
- REFERENCE
- D - DOOR - 1.50 X 2.10 MTS
  - D1 - DOOR - 1.05 X 2.10 MTS
  - D2 - DOOR - 0.75 X 2.10 MTS
  - W - WINDOW - 1.20 X 1.20 MTS
  - V - VENTILATOR - 0.6 X 0.6 MTS
  - V1 - VENTILATOR - 1.83 X 1.20 MTS

ALL DIMENSIONS ARE IN METERS

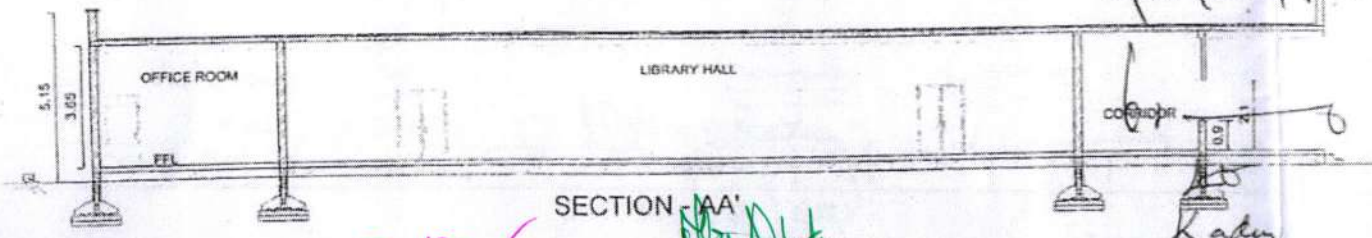
SCALE  
REMARKS



GROUND FLOOR



SECTION - BB'



SECTION - AA'

*K. Nagi Reddy*  
*AEE/APEWIDC*  
*J. Nagi Reddy*  
*AEE/Co/Project*

Drawn by  
 Checked by  
 Proj.No.  
 Scale  
 Date

LIBRARY BLOCK - GROUND FLOOR  
 PLINTH AREA - 688.17 SM (7407.4 SF)  
 PORTICO - 21.96 SQM (236.38 SFT)

PROJECT NAME: PROPOSED KVAFU GOVT COLLEGE (R)  
 CLIENT NAME:  
 PROJECT ADDRESS: *Kurnool*  
 KURNOL

ANDHRA PRADESH EDUCATION WELFARE AN  
 INFRASTRUCTURE  
 DEVELOPMENT CORPORATION  
 VIJAYAWADA

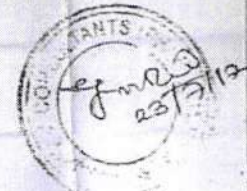
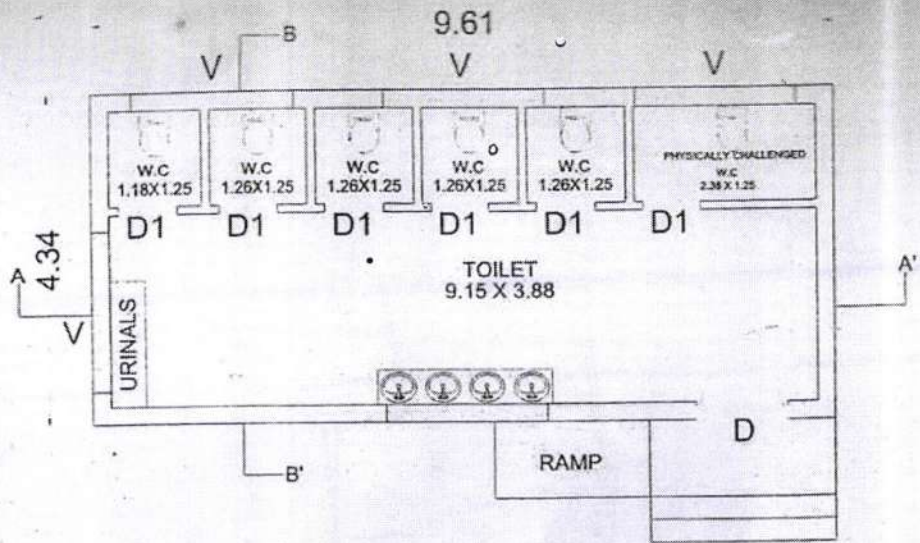
*KADAPA*  
 M/s. JAYAM CONSULTANTS PRIVT LT  
 HYDRAABAD  
 11-20-11-2011  
 11-20-11-2011

*AEE/Co/Project*  
*My duty*

*D. Sankar*  
*D. Sankar*  
*Project*

**EXECUTIVE ENGINEER**  
**APEWIDC**  
**KADAPA.**

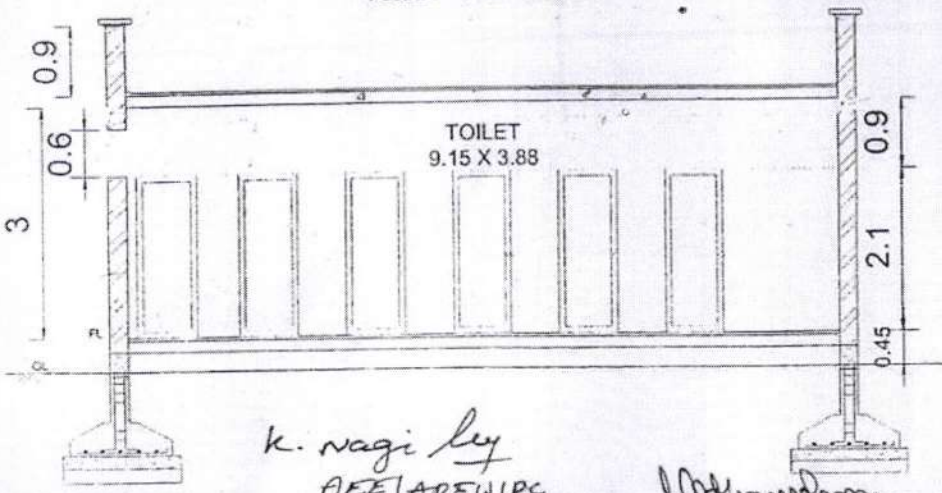




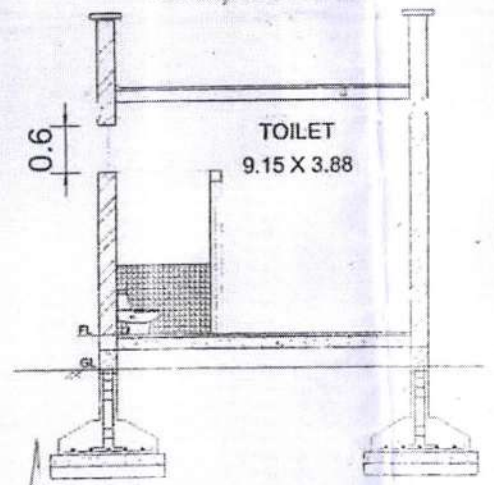
NOTED  
 ALL DIMENSIONS ARE IN METERS

SCALE  
 REMARKS

TOILET - SECTION AA'



TOILET - SECTION BB'



Drawn by  
 Checked by  
 Proj. No.  
 Scale  
 Date

TOILET BLOCK - GROUND FLOOR  
 PLINTH AREA- 41.71 SM ( 448.96 SF)

PROJECT NAME PROPOSED KVR GOVT COLLEGE (A)

CLIENT NAME

PROJECT ADDRESS *Kurnool*

ANDHRA PRADESH EDUCATION WELFARE AND  
 INFRASTRUCTURE  
 DEVELOPMENT CORPORATION  
 VIJAYAWADA

*K. Nagi*  
 AEE/APEWIDC

*[Signature]*

*[Signature]*

LEAD  
*[Signature]*

*D. Srinivas*  
 DICEE

*[Signature]*  
 EXECUTIVE ENGINEER  
 APEWIDC  
 KADAPA.

*[Signature]*  
 KADAPA



**భూమి కొలతల పటము**  
**FIELD MEASUREMENT SKETCH**

జిల్లా :  
 DISTRICT : 1018Y.S.R

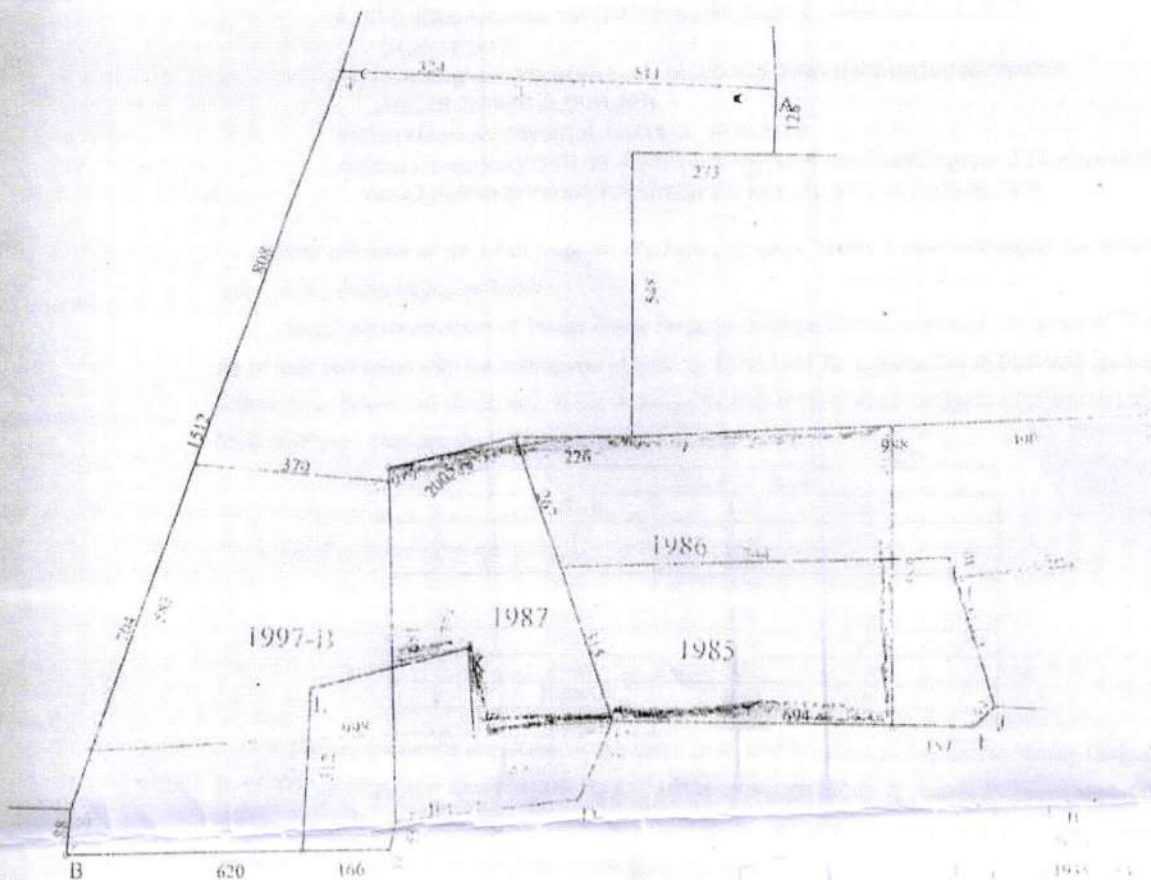
మండలము :  
 MANDAL : MYDUKUR

గ్రామము నెంబరు : 23  
 VILLAGE NUMBER

ఫీల్డ్ నెంబరు : 1997  
 FIELD NUMBER

గ్రామము పేరు :  
 VILLAGE NAME : Mydukur

విస్తీర్ణం : హెక్టార్లు : 3 ఏకర : 70 చ.మీ : 37028.7  
 AREA : HECTARES      ARES      Sq.Mts.  
 విస్తీర్ణము :                  ఏకర : 15  
 ARES                          GUNAS



S.No	Area	Perch	Sq.Mts
1	451	1870	1935
2	421	1500	1500
3	88	357	357
4	254	681	681
5	116	468	468
6	187	748	748
7	3	118	118
8	126	497	497
9	379	1500	1500
10	200	787	787
11	226	896	896
12	968	3840	3840
13	100	392	392
14	254	987	987
15	116	457	457
16	694	2713	2713
17	187	734	734
18	704	2768	2768
19	1512	5888	5888
20	308	1198	1198
21	704	2768	2768
22	1512	5888	5888
23	308	1198	1198
24	704	2768	2768
25	1512	5888	5888
26	308	1198	1198
27	704	2768	2768
28	1512	5888	5888
29	308	1198	1198
30	704	2768	2768
31	1512	5888	5888
32	308	1198	1198
33	704	2768	2768
34	1512	5888	5888
35	308	1198	1198
36	704	2768	2768
37	1512	5888	5888
38	308	1198	1198
39	704	2768	2768
40	1512	5888	5888
41	308	1198	1198
42	704	2768	2768
43	1512	5888	5888
44	308	1198	1198
45	704	2768	2768
46	1512	5888	5888
47	308	1198	1198
48	704	2768	2768
49	1512	5888	5888
50	308	1198	1198
51	704	2768	2768
52	1512	5888	5888
53	308	1198	1198
54	704	2768	2768
55	1512	5888	5888
56	308	1198	1198
57	704	2768	2768
58	1512	5888	5888
59	308	1198	1198
60	704	2768	2768
61	1512	5888	5888
62	308	1198	1198
63	704	2768	2768
64	1512	5888	5888
65	308	1198	1198
66	704	2768	2768
67	1512	5888	5888
68	308	1198	1198
69	704	2768	2768
70	1512	5888	5888
71	308	1198	1198
72	704	2768	2768
73	1512	5888	5888
74	308	1198	1198
75	704	2768	2768
76	1512	5888	5888
77	308	1198	1198
78	704	2768	2768
79	1512	5888	5888
80	308	1198	1198
81	704	2768	2768
82	1512	5888	5888
83	308	1198	1198
84	704	2768	2768
85	1512	5888	5888
86	308	1198	1198
87	704	2768	2768
88	1512	5888	5888
89	308	1198	1198
90	704	2768	2768
91	1512	5888	5888
92	308	1198	1198
93	704	2768	2768
94	1512	5888	5888
95	308	1198	1198
96	704	2768	2768
97	1512	5888	5888
98	308	1198	1198
99	704	2768	2768
100	1512	5888	5888
101	308	1198	1198
102	704	2768	2768
103	1512	5888	5888
104	308	1198	1198
105	704	2768	2768
106	1512	5888	5888
107	308	1198	1198
108	704	2768	2768
109	1512	5888	5888
110	308	1198	1198
111	704	2768	2768
112	1512	5888	5888
113	308	1198	1198
114	704	2768	2768
115	1512	5888	5888
116	308	1198	1198
117	704	2768	2768
118	1512	5888	5888
119	308	1198	1198
120	704	2768	2768
121	1512	5888	5888
122	308	1198	1198
123	704	2768	2768
124	1512	5888	5888
125	308	1198	1198
126	704	2768	2768
127	1512	5888	5888
128	308	1198	1198
129	704	2768	2768
130	1512	5888	5888
131	308	1198	1198
132	704	2768	2768
133	1512	5888	5888
134	308	1198	1198
135	704	2768	2768
136	1512	5888	5888
137	308	1198	1198
138	704	2768	2768
139	1512	5888	5888
140	308	1198	1198
141	704	2768	2768
142	1512	5888	5888
143	308	1198	1198
144	704	2768	2768
145	1512	5888	5888
146	308	1198	1198
147	704	2768	2768
148	1512	5888	5888
149	308	1198	1198
150	704	2768	2768